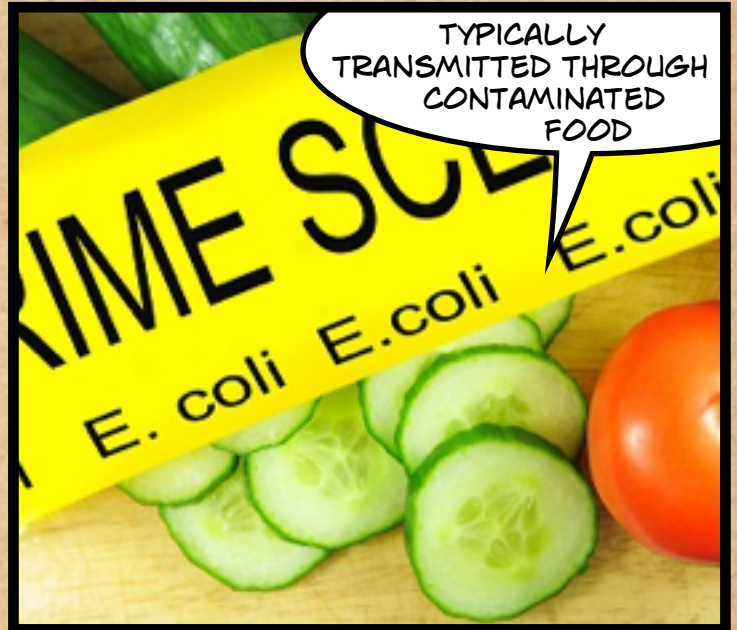


E. COLI O157 H7

THE CULPRIT... E. COLI O157 H7

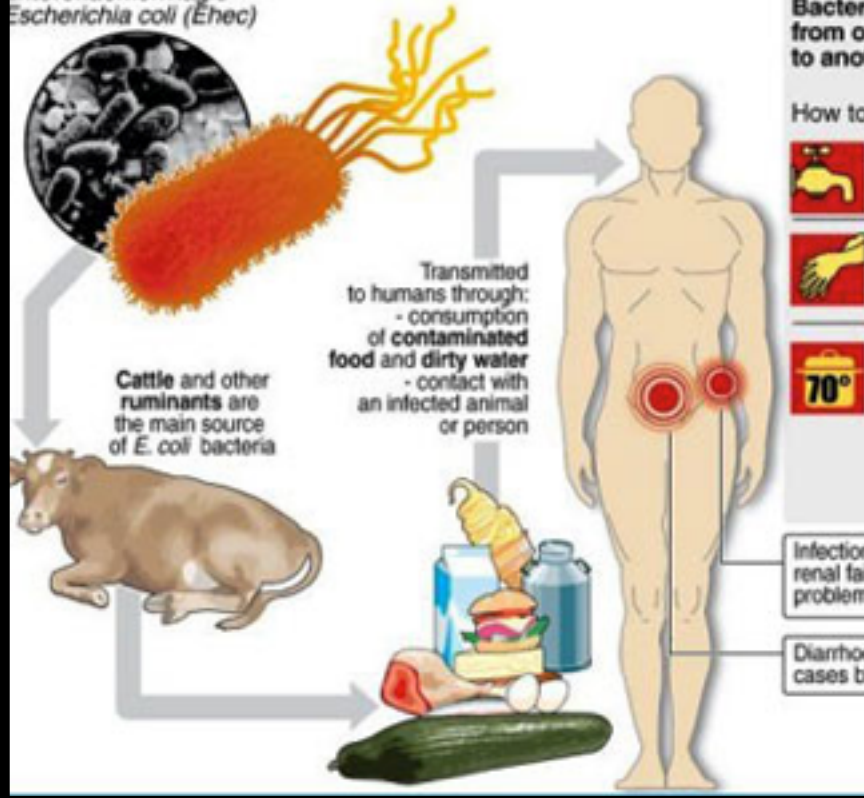


TYPICALLY
TRANSMITTED THROUGH
CONTAMINATED
FOOD



BUT THE SOURCE IS USUALLY
FROM COWS....

Enterohaemorrhagic
Escherichia coli (Ehec)



THE SYMPTOMS ...

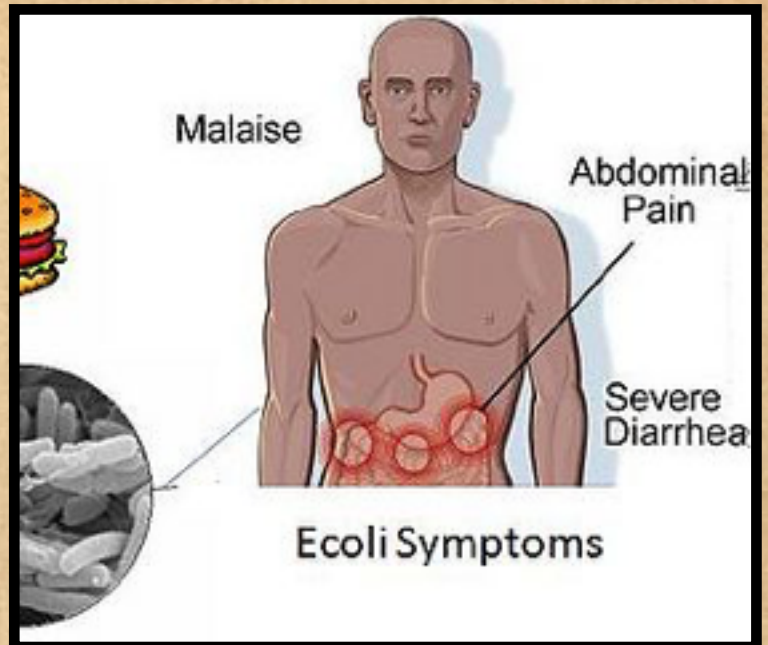
OH MY
STOMACH...
...

KERANNNGG!

SYMPTOMS....



TIREDNESS, SEVERE DIARRHEA,
VOMITING, ABDOMINAL PAIN



WHAT DO WE NEED TO DO TO
PREVENT OUTBREAKS OF E-COLI
O157 H7:

1. WASH OUR
HANDS BEFORE
WORKING WITH
FOOD.

2. COOK MEAT TO
KILL ALL
BACTERIA.



WASH YOUR HANDS AND FOOD! COOK YOUR MEAT!