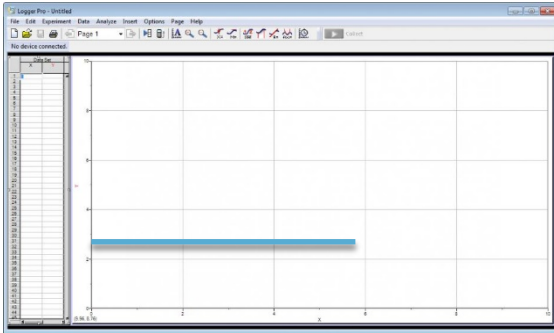


Students will complete the following assessment:

1. To create the straight line located at the bottom of the graph:



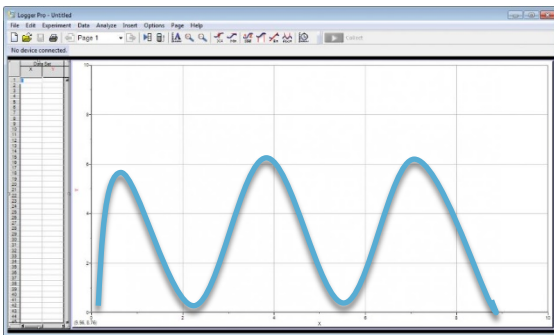
I started near or far away from the Go! Motion. (Circle one)

I stood still for _____ seconds.

I moved forward _____ times or backward _____ times? (Circle one)

I moved fast or slow? (Circle one)

2. To create a graph of a wavy line:



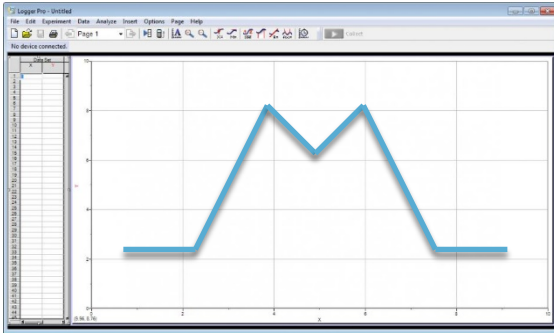
I started **near** or **far** away from the Go! Motion. (Circle one)

I stood still for _____ seconds.

I moved **forward** _____ times or **backward** _____ times? (Circle one)

I moved **fast** or **slow**? (Circle one)

3. To create an “M” on the graph:



I started **near** or **far** away from the Go! Motion. (Circle one)

I stood still for _____ seconds.

I first moved **forward** or **backward**? For ___ seconds (Circle one)

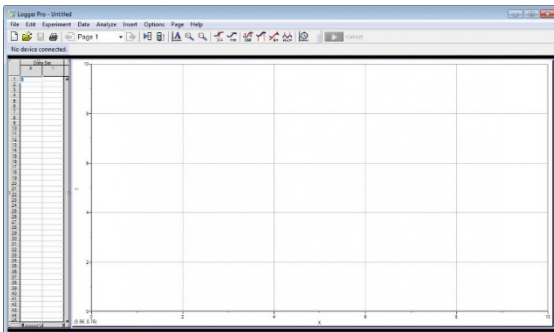
I first moved **forward** or **backward**? For ___ seconds (Circle one)

I first moved **forward** or **backward**? For ___ seconds (Circle one)

I first moved **forward** or **backward**? For ___ seconds (Circle one)

I moved **fast** or **slow**? (Circle one)

4. Draw your prediction of what the following movement would like on the graph.



Student starts far away from the Go! Motion Sensor, walks forward for three second, then backwards for three seconds, then forward for three seconds.

Reference: <http://www.vernier.com/experiments/ewv/21/e-motion/>