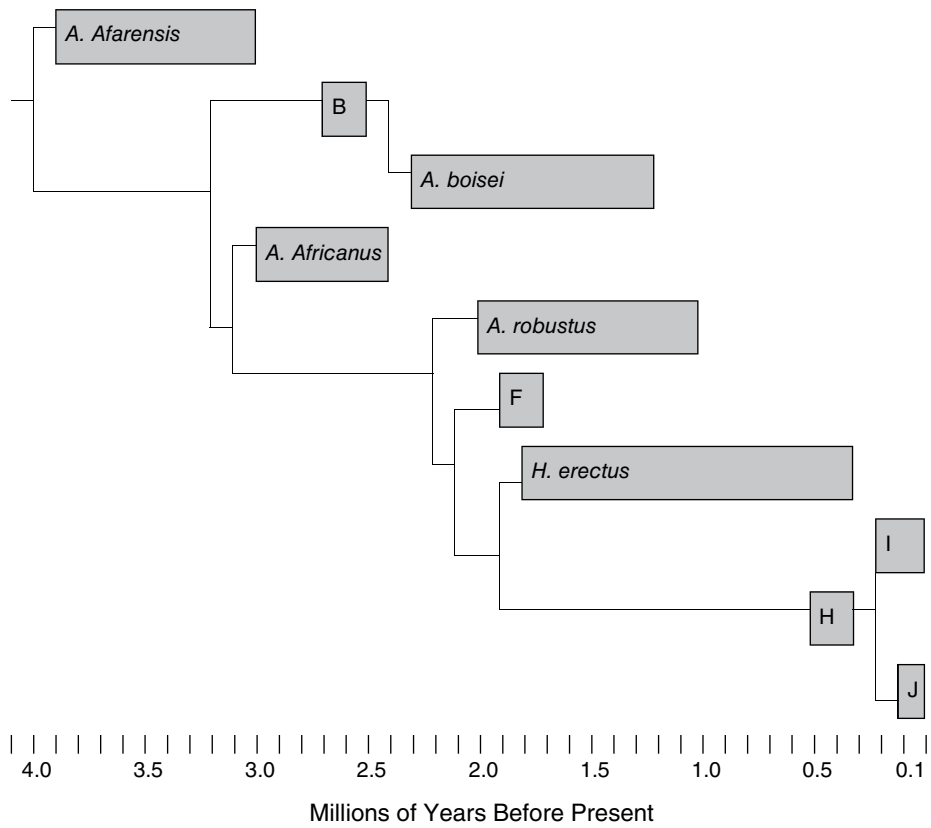


SECTION 2: EVALUATE ALTERNATIVES

17 HOMINID EVOLUTION

Explanation 3

Figure 17.4. Hominid Phylogenetic Relationship Version C



Note: Species B is *P. aethiopicus*; species F is *H. habilis*, species I is *H. neanderthalensis*, species J is *H. Sapiens*.