

SECTION 2: EVALUATE ALTERNATIVES

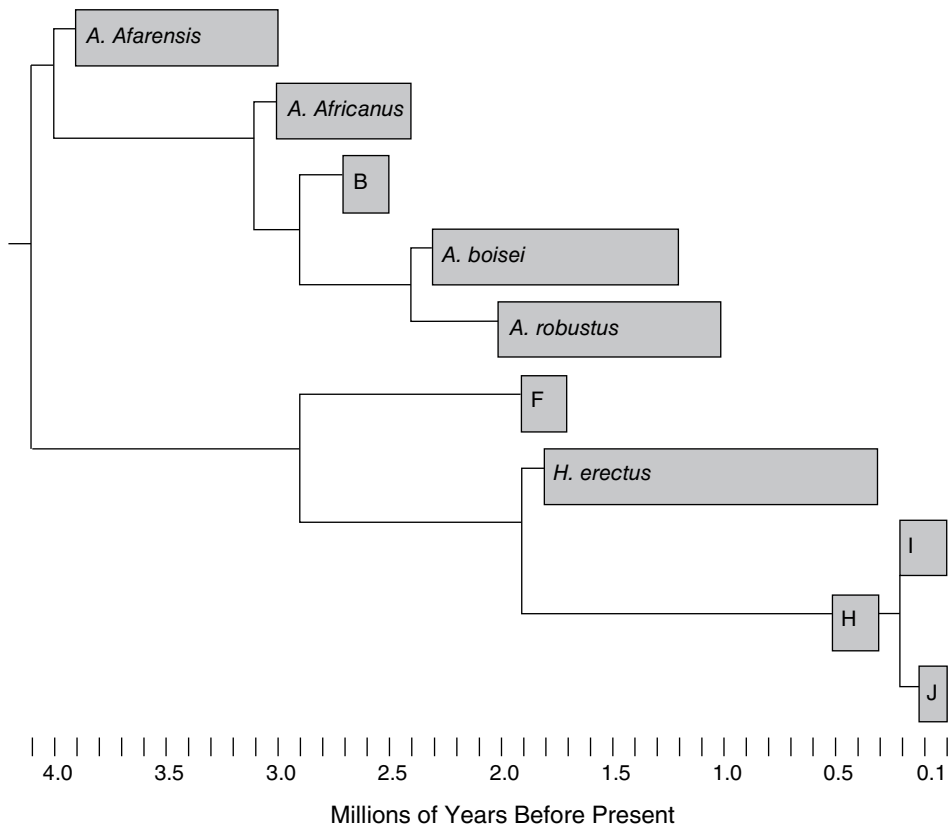
17 HOMINID EVOLUTION

These observations raise an interesting question: **What is the phylogenetic relationship of this group of hominids?**

Here are three potential answers to this question:

Explanation 1

Figure 17.2. Hominid Phylogenetic Relationship Version A



Note: Species B is *P. aethiopicus*; species F is *H. habilis*, species I is *H. neanderthalensis*, species J is *H. Sapiens*.